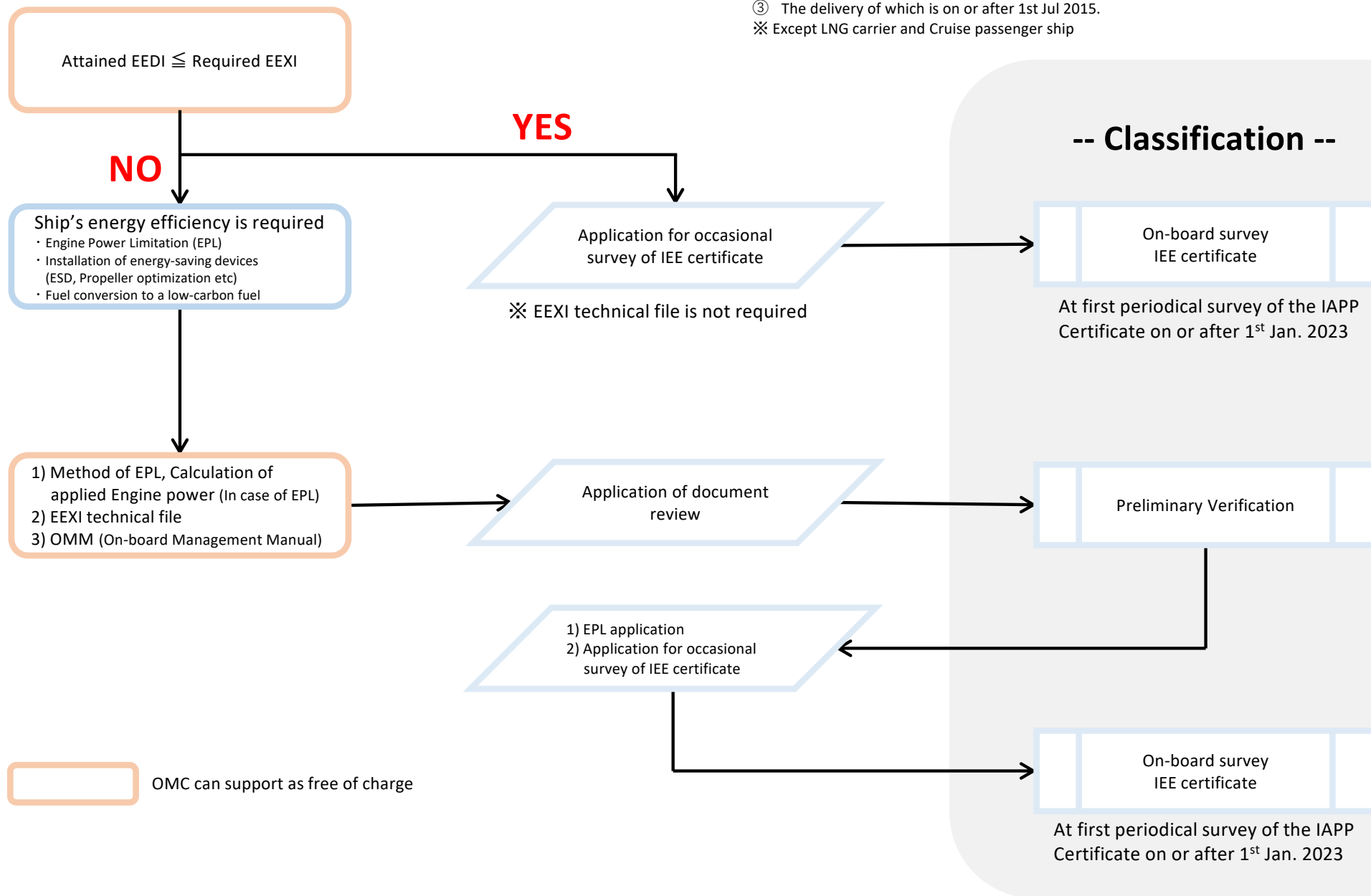


EEDI vessel (EEDI technical file on board)

EEDI vessel means that is applied following

- ① For which the building contract is placed on or after 1st Jan. 2013; or
 - ② In the absence of a building contract, the keel of which is laid or which is at a similar stage of construction on or after 1st Jul. 2013; or
 - ③ The delivery of which is on or after 1st Jul 2015.
- ※ Except LNG carrier and Cruise passenger ship



-- Classification --

Non-EEDI vessel (EEDI technical file **Not** on board)

